



FAG

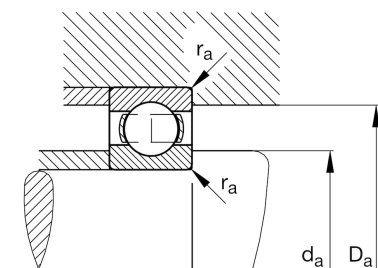
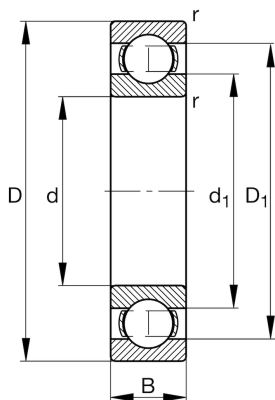
61809-Y

Deep groove ball bearing

Schaeffler ID:
0096193720000

Deep groove ball bearing 618.-Y, single row, brass sheet metal cage

Technical information

**Main Dimensions & Performance Data**

| | | |
|----------|--------------|-----------------------------------|
| d | 45 mm | Bore diameter |
| D | 58 mm | Outside diameter |
| B | 7 mm | Width |
| C_r | 7.000 N | Basic dynamic load rating, radial |
| C_{0r} | 5.900 N | Basic static load rating, radial |
| C_{ur} | 400 N | Fatigue load limit, radial |
| n_G | 21.900 1/min | Limiting speed |
| n_{gr} | 7.300 1/min | Reference speed |
| | 0,039 kg | Weight |

Dimensions

| | | |
|-----------|---------|------------------------------|
| r_{min} | 0,3 mm | Minimum chamfer dimension |
| D_1 | 54,1 mm | Shoulder diameter outer ring |
| d_1 | 49,1 mm | Shoulder diameter inner ring |

Mounting dimensions

| | | |
|-------------|--------|--------------------------------------|
| $d_{a min}$ | 47 mm | Minimum diameter shaft shoulder |
| $D_{a max}$ | 56 mm | Maximum diameter of housing shoulder |
| $r_{a max}$ | 0,3 mm | Maximum fillet radius |

Calculation factors

| | | |
|-------|------|--------------------|
| f_0 | 16,3 | Calculation factor |
|-------|------|--------------------|

Temperature range

| | | |
|-----------|--------|----------------------------|
| T_{min} | -30 °C | Operating temperature min. |
| T_{max} | 120 °C | Operating temperature max. |